

# High Stability Liquid Crystal Spatial Light Modulator

## HDSL80R Plus Series



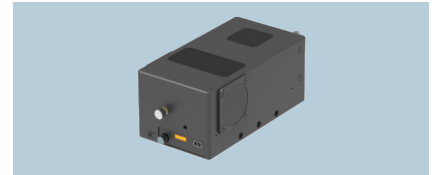
### HDSL80R Plus Integrated Version

- Small size for easy integration
- Adjustable LCoS optical module by the angle of pitched up and pitched down
- Rise-fall main SLM unit
- Built-in water cooling



### HDSL80R Plus Split Version

- SLM screen is designed separated from the power driver board for a flexible optical path
- Good thermal stability



### HDSL80RT Transmissive

- Optical path construction in one step
- Unique design, easy to use

Compared with HDSL80R SLM, HDSL80R Plus SLM has been upgraded as a version of 10-bit 1024 gray scale. It features one click to switch between 8-bit and 10-bit, image switching synchronization pulse, programming control GPIO and built-in zero-level deviation. Two structural designs are available for sales: integrated-structure type and separated-structure type.

## Product Parameter

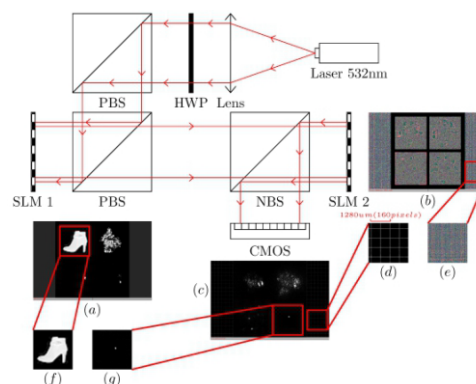
Types	Modulation Mode	Resolution	Frame Rate	Pixel Size	Bit Depth	Fill Factor	Amplitude Contrast	Phase Retardance	Wavelength	Active Area	Interface
HDSL80R Plus	Phase-only	1920*1200	60Hz	8μm	Freely configuration of 8bit/10bit	> 95%	/	2.6π@1064nm	420-1100nm	15.36*9.6mm	Mini HDMI
HDSL80R Plus-NIR								2.5π@1064nm	1064±100nm		
HDSL80R Plus-TELCO								2.6π@1550nm	1550±100nm		
HDSL80R Plus-G								2.8π@532nm	420-600nm		
HDSL80RA Plus	Only amplitude						~1000:1	/	420-1100nm		

## Application

- Laser processing
- Projection lithography
- Holographic applications
- Optical field regulation
- Laser
- Microscope
- Optical network neural computing
- Others

## Thesis

«Partitionable High-Efficiency Multilayer Diffractive Optical Neural Network» Sensors 2022, 22, 7110.



Optical experiment system